

Accessing the Global Health eLearning Center course

Health Workforce Productivity: An Approach for Measurement, Analysis, and Improvement

Course Objective

At the end of the course, you should be able to do the following:

- Provide a definition of health workforce productivity
- Understand one approach for measuring health workforce productivity at the facility level
- Explain some of the possible underlying causes of low health workforce productivity
- List possible interventions to consider when seeking to improve health workforce productivity

Time

2 Hours

Related Courses

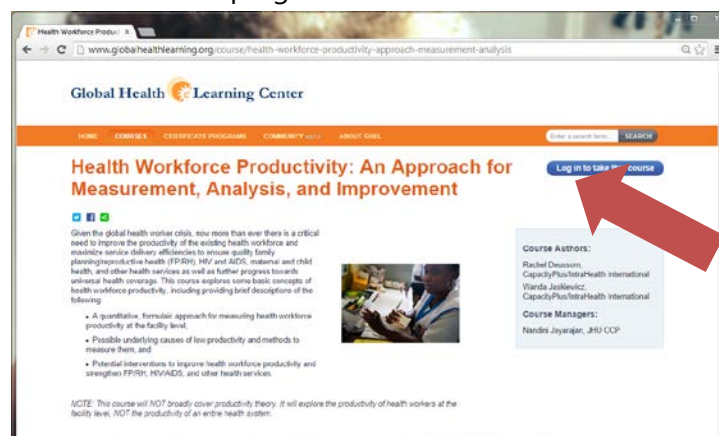
- [Human Resources for Health \(HRH\) Basics](#)
- [Gender and Health Systems Strengthening](#)

1. Click on the course [link](#).

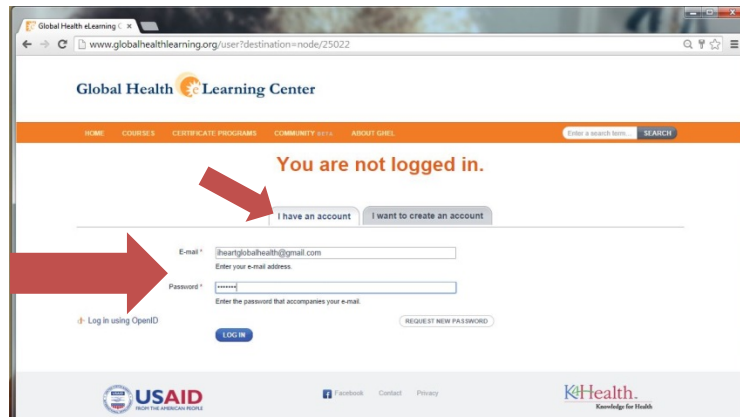
Alternatively, copy and paste this URL into your internet browser:

<http://www.globalhealthlearning.org/course/health-workforce-productivity-approach-measurement-analysis>

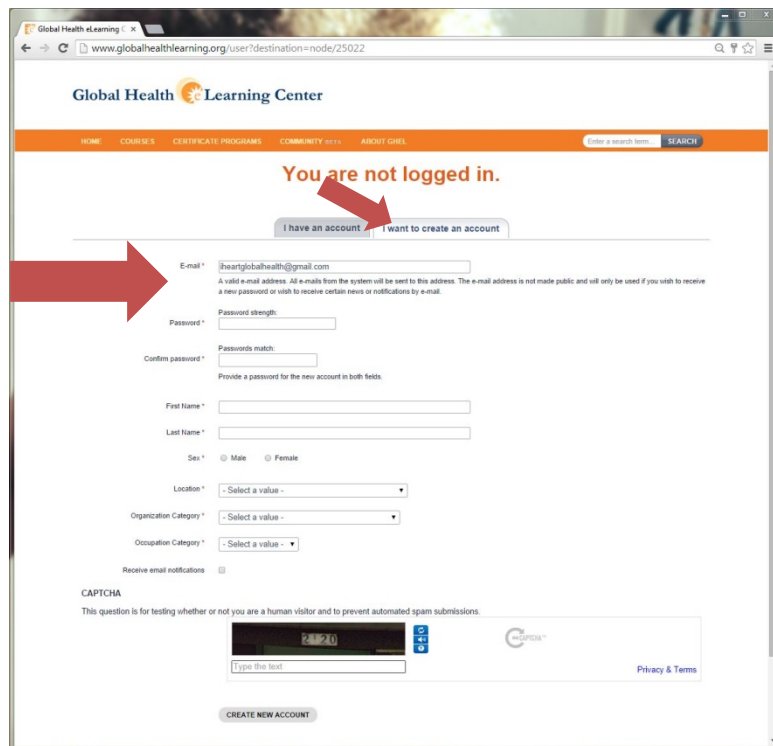
2. **Log in:** On the course home page, you will need to log in to your user account to begin taking the course. Click on the blue button at the top right:



a. If you already have a Global Health eLearning Center user account, then log in by entering your user name and password on the **"I have an account"** tab:



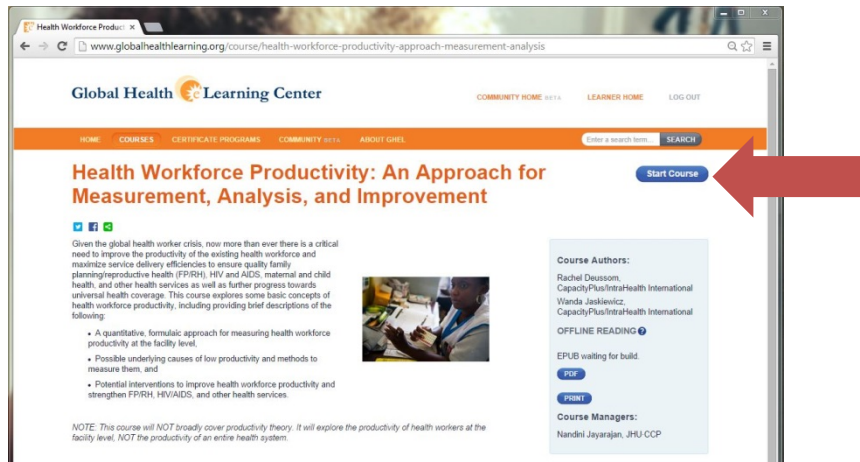
- b. If you do not yet have a Global Health eLearning Center user account, then create one by entering your email address, creating a password, and providing some basic demographic data on the “**I want to create an account**” tab:



You will then need to confirm the email address that you provided to complete your user account. Check this email account for a message from GHLearningAdmin@usaid.org and click on the one-time login link provided in the email to verify the account. You may be prompted to update or confirm your password.

If you are still having trouble creating a user account, then contact the Global Health eLearning Center: <http://www.globalhealthlearning.org/about/contact>

3. **Start course:** Once you have successfully logged into the Global Health eLearning Center, you can start the course by clicking on the blue button at the top right:



4. **Navigate course:** To navigate the course, read the content on each page and click from page to page using the white buttons at the bottom of the page.



Alternatively, you can access the list of course pages by session by clicking on the second tab of the right side column and selecting the page that you would like to view:

To view the course references, click on the third tab of the right side column:

For additional information, review the Global Health eLearning Center:

- Guidance on how to use courses: <http://www.globalhealthlearning.org/about/how-to-use-courses>
- Frequently Asked Questions: <http://www.globalhealthlearning.org/about/faqs>
- Contact: <http://www.globalhealthlearning.org/about/contact>